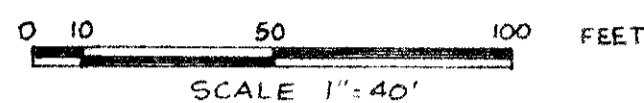


# PLAT OF FLAMANGO LAKE WEST

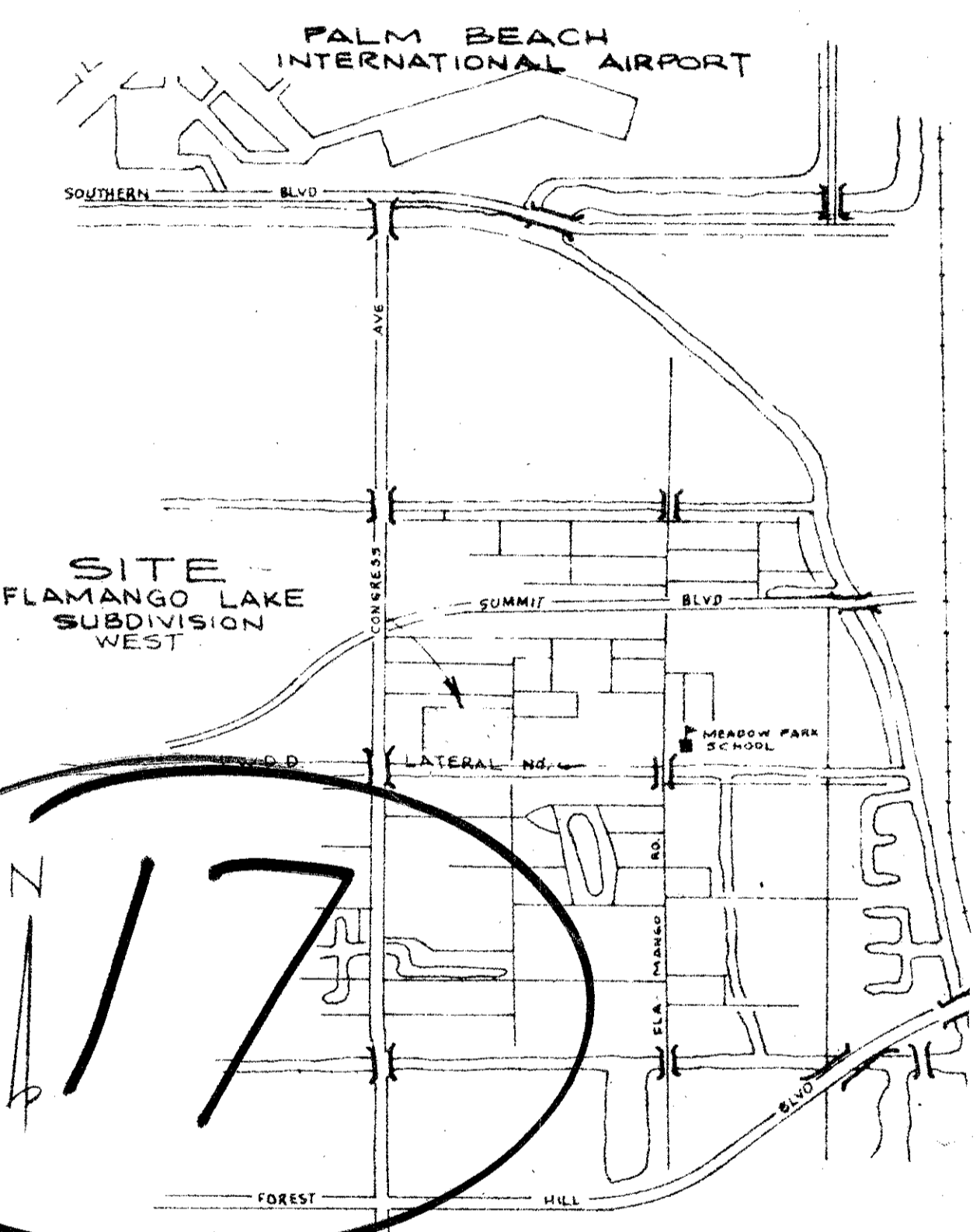
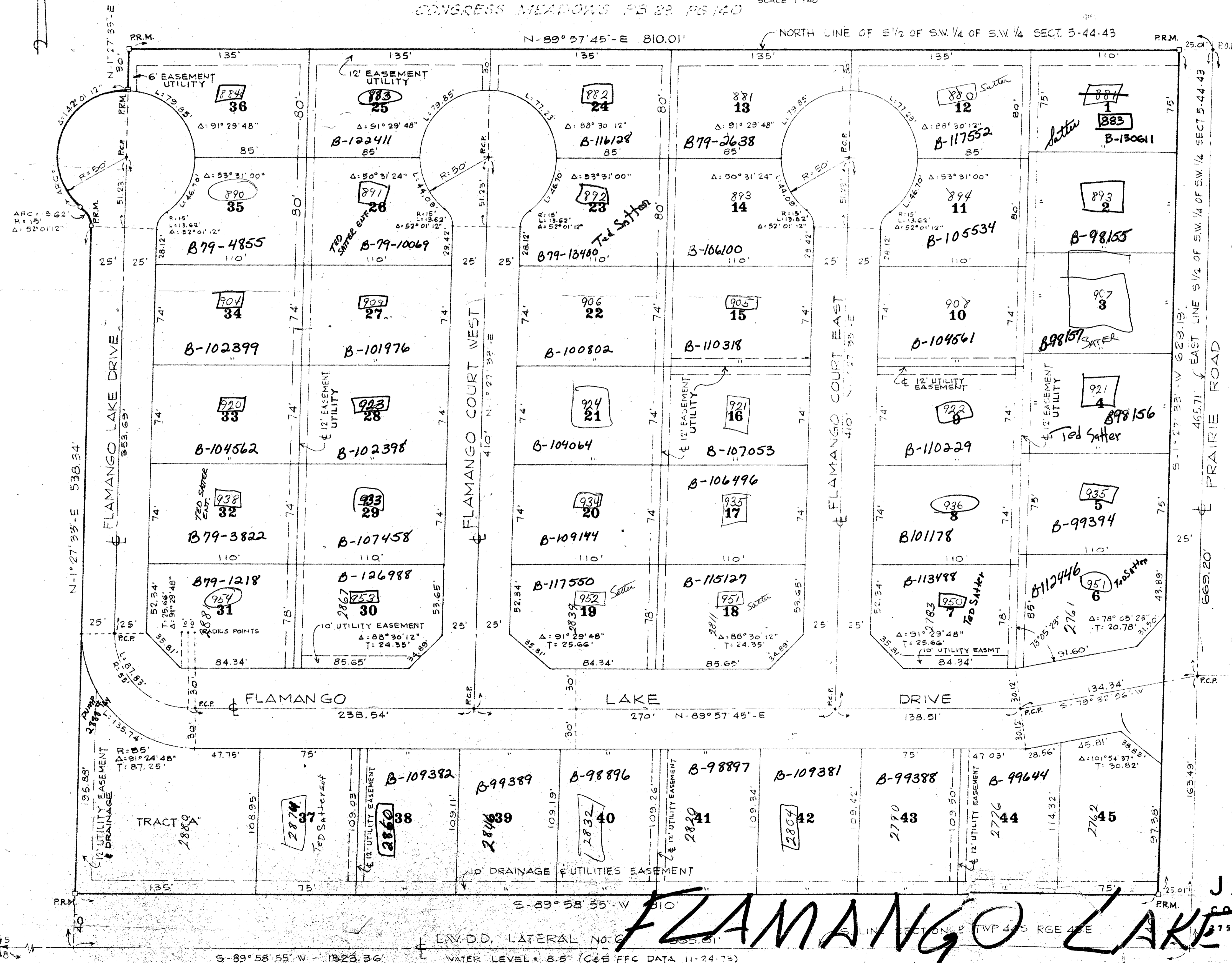
BEING IN THE SOUTH 1/2 OF THE S.W. 1/4 OF THE S.W. 1/4 OF SECTION 5, TOWNSHIP 44 SOUTH, RANGE 43 EAST, PALM BEACH COUNTY, FLORIDA  
SHEET 2 IN 2 SHEETS

JUNE 1976



CONGRESS MEADOWS PS 22 PG 140

NORTH LINE OF S 1/2 OF S.W. 1/4 OF S.W. 1/4 SECT. 5-44-43



VICINITY MAP  
SCALE: 1" = 1/4 MILE

5/44 1000-159  
/43 32

JAMES D. CARLTON, INC.  
CONSULTING ENGINEERS AND LAND SURVEYORS  
2750 OKE HOBBS BULVARD WEST PALM BEACH, FLORIDA

# FLAMANGO LAKE WEST

L.V.D.D. LATERAL No. 6  
S-89°58'55"-W 1323.36  
WATER LEVEL = 8.5' (C&S FFC DATA 11-24-75)